

**State of Montana
Oil & Gas Lease Sale - March 6, 2012
Final Sale List**

The following described lands will be offered for oil and gas leasing through oral competitive bidding in the Scott Hart auditorium, 303 North Roberts, Helena, Montana, beginning at 9:00 am, March 6, 2012.

Tract	Stipulations	Twp	Rng	Sec	Description	Acres	Bid/Acre	Bidder
Cascade								
1	2, 3, 4, 5, 6, 7, 12, 14, 20	15.N	3.E	36	Lots 1, 2, 3, 4, 5, 12, W2, Smith Riverbed and related acreage	455.22	_____	_____
2	2, 3, 4, 5, 6, 7, 12, 14, 20	16.N	3.E	36	All	640.00	_____	_____
3	1, 2, 3, 4, 5, 6, 10, 12, 14	18.N	1.E	3	Lots 5, 6, Missouri Riverbed and related acreage	157.33	_____	_____
4	1, 2, 3, 4, 5, 6, 10, 12, 14	18.N	1.E	4	Lots 3, 4, 5, 7, S2NW4, SW4NE4, N2SW4, SW4SW4, Missouri Riverbed and related acreage	* 443.09	_____	_____
5	1, 2, 3, 4, 5, 6, 7	18.N	1.E	5	Lots 1, 2, 3, 4, S2NW4, W2SW4	330.56	_____	_____
6	1, 2, 3, 4, 5, 6, 7	18.N	1.E	6	Lots 1, 2, 4, 5, 6, 7, S2NE4, SE4, E2SW4	* 551.20	_____	_____
7	1, 2, 3, 4, 5, 6	18.N	1.E	7	Lots 1, 2, NE4NW4	114.94	_____	_____
8	1, 2, 3, 4, 5, 6, 7	18.N	1.E	15	S2S2, NW4SW4	200.00	_____	_____
9	1, 2, 3, 4, 5, 6, 7, 10, 11, 12, 14	18.N	1.E	16	Lots 1 thru 9, SE4, NE4SW4, S2SW4, Missouri Riverbed and related acreage	* 640.00	_____	_____
10	1, 2, 3, 4, 5, 6, 12, 14	18.N	1.E	19	Lot 10, Missouri Riverbed and related acreage	61.75	_____	_____
11	1, 2, 3, 4, 5, 6, 7	18.N	1.E	22	N2NW4, NE4, N2SE4, NE4SW4, S2SW4	* 440.00	_____	_____
12	1, 2, 3, 4, 5, 6	18.N	1.E	26	SW4SE4, E2SW4	120.00	_____	_____
13	1, 2, 3, 4, 5, 6, 12, 14	18.N	1.E	30	Lots 10, 11, Missouri Riverbed and related acreage	90.63	_____	_____
14	1, 2, 3, 4, 5, 6	18.N	1.E	35	NW4NE4	40.00	_____	_____
15	1, 2, 3, 4, 5, 6, 7	18.N	1.E	36	All	* 640.00	_____	_____
16	1, 2, 3, 4, 5, 6, 10	18.N	2.E	4	Lot 1, SE4NE4, SE4	234.74	_____	_____
17	1, 2, 3, 4, 5, 6, 10	18.N	2.E	16	All	* 640.00	_____	_____
18	1, 2, 3, 4, 5, 6	18.N	2.E	34	SE4SE4	* 40.00	_____	_____
19	1, 2, 3, 4, 5, 6, 7, 10, 11, 12	18.N	2.E	36	All	* 640.00	_____	_____
20	1, 2, 3, 4, 5, 6, 7	19.N	1.E	3	N2SE4, SW4SE4, SW4	280.00	_____	_____
21	1, 2, 3, 4, 5, 6	19.N	1.E	6	Lot 3	40.15	_____	_____
22	1, 2, 3, 4, 5, 6	19.N	1.E	7	E2SW4	80.00	_____	_____
23	1, 2, 3, 4, 5, 6, 8	19.N	1.E	11	SE4	160.00	_____	_____
24	1, 2, 3, 4, 5, 6, 7	19.N	1.E	15	SW4SE4, S2SW4	120.00	_____	_____
25	1, 2, 3, 4, 5, 6	19.N	1.E	16	All	640.00	_____	_____
26	1, 2, 3, 4, 5, 6	19.N	1.E	17	S2	320.00	_____	_____
27	1, 2, 3, 4, 5, 6	19.N	1.E	18	Lots 3, 4, E2W2, SE4	392.24	_____	_____
28	1, 2, 3, 4, 5, 6	19.N	1.E	22	NW4NE4	40.00	_____	_____
29	1, 2, 3, 4, 5, 6	19.N	1.E	30	Lot 4	36.90	_____	_____

Tract	Stipulations	Twp	Rng	Sec	Description	Acres	Bid/Acre	Bidder
30	1, 2, 3, 4, 5, 6	19.N	1.E	31	Lot 4	37.00	_____	_____
31	1, 2, 3, 4, 5, 6, 10	19.N	1.E	32	E2SE4	80.00	_____	_____
32	1, 2, 3, 4, 5, 6, 10	19.N	1.E	33	SW4	160.00	_____	_____
33	1, 2, 3, 4, 5, 6, 10, 11, 12, 14	19.N	1.E	36	Lots 1, 2, 3, E2NW4, NW4NE4, S2NE4, S2, Missouri Riverbed and related acreage	631.70	_____	_____
34	1, 2, 3, 4, 5, 6, 10, 11, 12, 16	19.N	2.E	16	All	640.00	_____	_____
35	1, 2, 3, 4, 5, 6, 8, 16	19.N	2.E	21	NW4, N2NE4, SW4NE4	280.00	_____	_____
36	1, 2, 3, 4, 5, 6, 10, 12, 14	19.N	2.E	29	SE4SE4, Missouri Riverbed and related acreage	45.00	_____	_____
37	1, 2, 3, 4, 5, 6, 7, 8, 10, 11, 12, 14	19.N	2.E	31	Lots 1, 2, 3, E2NW4, Missouri Riverbed and related acreage	190.42	_____	_____
38	1, 2, 3, 4, 5, 6, 10	19.N	2.E	32	E2NE4	80.00	_____	_____
39	1, 2, 3, 4, 5, 6, 7, 10	19.N	2.E	33	SW4NW4, S2SE4	120.00	_____	_____
40	1, 2, 3, 4, 5, 6, 7, 10	19.N	2.E	36	All	* 640.00	_____	_____
Fergus								
41	1, 2, 3, 4, 5, 6	11.N	16.E	16	All	* 640.00	_____	_____
42	1, 2, 3, 4, 5, 6, 17	11.N	16.E	20	All, less 1.2 acres in the NW4NW4	* 638.80	_____	_____
43	1, 2, 3, 4, 5, 6	11.N	17.E	16	N2, N2SE4, E2SW4	480.00	_____	_____
44	1, 2, 3, 4, 5, 6	12.N	15.E	12	All, less 14.03 acres patented RR R/W in S2	625.97	_____	_____
45	1, 2, 3, 4, 5, 6	12.N	15.E	14	S2	* 320.00	_____	_____
46	1, 2, 3, 4, 5, 6	12.N	16.E	4	W2SW4	80.00	_____	_____
47	1, 2, 3, 4, 5, 6	12.N	16.E	5	NE4SE4, S2SE4	120.00	_____	_____
48	1, 2, 3, 4, 5, 6	12.N	16.E	8	N2NE4	80.00	_____	_____
49	1, 2, 3, 4, 5, 6, 7	12.N	16.E	9	W2NW4	80.00	_____	_____
50	1, 2, 3, 4, 5, 6, 7	12.N	16.E	16	N2, NW4SE4, N2SW4	440.00	_____	_____
51	1, 2, 3, 4, 5, 6	12.N	16.E	26	SW4NE4, NW4SE4, NE4SW4, SE4NW4	160.00	_____	_____
52	1, 2, 3, 4, 5, 6	12.N	16.E	36	All	* 640.00	_____	_____
53	1, 2, 3, 4, 5, 6, 7	13.N	16.E	36	NE4, S2	* 480.00	_____	_____
54	1, 2, 3, 4, 5, 6	14.N	18.E	8	W2SE4	* 80.00	_____	_____
55	1, 2, 3, 4, 5, 6, 7, 15	14.N	18.E	16	E2W2, E2	* 480.00	_____	_____
56	1, 2, 3, 4, 5, 6, 7	14.N	18.E	17	E2	* 320.00	_____	_____
57	1, 2, 3, 4, 5, 6	15.N	19.E	16	All	640.00	_____	_____
58	1, 2, 3, 4, 5, 6, 7	15.N	19.E	36	All	* 640.00	_____	_____
Garfield								
59	1, 2, 3, 4, 5, 6, 7	13.N	40.E	16	All	640.00	_____	_____
60	1, 2, 3, 4, 5, 6	13.N	41.E	16	All	640.00	_____	_____

Tract	Stipulations	Twp	Rng	Sec	Description	Acres	Bid/Acre	Bidder
61	1, 2, 3, 4, 5, 6	13.N	42.E	16	All	640.00	_____	_____
62	1, 2, 3, 4, 5, 6	14.N	39.E	36	All	640.00	_____	_____
63	1, 2, 3, 4, 5, 6	14.N	40.E	16	All	640.00	_____	_____
64	1, 2, 3, 4, 5, 6, 7	14.N	40.E	36	All	640.00	_____	_____
65	1, 2, 3, 4, 5, 6	14.N	41.E	16	All	640.00	_____	_____
66	1, 2, 3, 4, 5, 6	14.N	41.E	24	W2, less public highway	318.35	_____	_____
67	1, 2, 3, 4, 5, 6	14.N	41.E	36	All	640.00	_____	_____
68	1, 2, 3, 4, 5, 6	14.N	42.E	8	N2	320.00	_____	_____
69	1, 2, 3, 4, 5, 6	14.N	42.E	16	All	640.00	_____	_____
70	1, 2, 3, 4, 5, 6	14.N	42.E	36	All	640.00	_____	_____
71	1, 2, 3, 4, 5, 6	14.N	43.E	36	All	640.00	_____	_____
72	1, 2, 3, 4, 5, 6	14.N	44.E	16	All	640.00	_____	_____
73	1, 2, 3, 4, 5, 6	14.N	44.E	36	All	640.00	_____	_____
74	1, 2, 3, 4, 5, 6	15.N	34.E	16	All	640.00	_____	_____
75	1, 2, 3, 4, 5, 6, 9	15.N	39.E	36	All	640.00	_____	_____
76	1, 2, 3, 4, 5, 6	15.N	40.E	1	Lot 4, SW4NW4	79.65	_____	_____
77	1, 2, 3, 4, 5, 6	15.N	40.E	2	Lots 1, 2, 3, 4, S2N2, N2SE4, SW4	558.12	_____	_____
78	1, 2, 3, 4, 5, 6	15.N	40.E	16	All	640.00	_____	_____
79	1, 2, 3, 4, 5, 6	15.N	40.E	26	E2	320.00	_____	_____
80	1, 2, 3, 4, 5, 6, 9	15.N	40.E	36	All	640.00	_____	_____
81	1, 2, 3, 4, 5, 6, 8	15.N	43.E	16	All	640.00	_____	_____
82	1, 2, 3, 4, 5, 6	15.N	43.E	36	All	640.00	_____	_____
83	1, 2, 3, 4, 5, 6	15.N	44.E	16	All	640.00	_____	_____
84	1, 2, 3, 4, 5, 6	15.N	44.E	36	All	640.00	_____	_____
85	1, 2, 3, 4, 5, 6	16.N	43.E	36	All	640.00	_____	_____
86	1, 2, 3, 4, 5, 6, 8	16.N	44.E	16	All	640.00	_____	_____
87	1, 2, 3, 4, 5, 6	16.N	44.E	30	Lots 3, 4, E2SW4, SE4	315.56	_____	_____
88	1, 2, 3, 4, 5, 6	16.N	44.E	36	All	640.00	_____	_____
Glacier								
89	1, 2, 3, 4, 5, 6	32.N	5.W	16	All	640.00	_____	_____
90	1, 2, 3, 4, 5, 6, 8	34.N	6.W	36	SE4SW4, SE4, below the base of the Kootenai formation	200.00	_____	_____
91	1, 2, 3, 4, 5, 6, 8	34.N	6.W	36	NE4, below the base of the Kootenai formation	160.00	_____	_____

Tract	Stipulations	Twp	Rng	Sec	Description	Acres	Bid/Acre	Bidder
Judith Basin								
92	1, 2, 3, 4, 5, 6	11.N	15.E	3	S2SE4, SE4SW4	* 120.00	_____	_____
93	1, 2, 3, 4, 5, 6	11.N	15.E	10	NE4NW4, S2NW4, NE4, S2	* 600.00	_____	_____
94	2, 3, 4, 5, 6, 18	11.N	15.E	16	Lots 1, 2, 3, 4, W2E2	* 325.00	_____	_____
95	1, 2, 3, 4, 5, 6, 8	12.N	14.E	1	Lots 1, 2, 3, 4, S2N2	* 315.12	_____	_____
96	1, 2, 3, 4, 5, 6	12.N	14.E	2	Lots 1, 2, 3, 4	156.68	_____	_____
97	1, 2, 3, 4, 5, 6, 7	12.N	14.E	3	Lots 1, 2, SW4NW4, SE4, E2SW4	359.39	_____	_____
98	1, 2, 3, 4, 5, 6	12.N	14.E	4	S2N2	* 160.00	_____	_____
99	1, 2, 3, 4, 5, 6	12.N	14.E	13	S2N2, NW4SE4, N2SW4, SW4SW4	320.00	_____	_____
100	1, 2, 3, 4, 5, 6	12.N	14.E	14	S2SW4	* 80.00	_____	_____
101	1, 2, 3, 4, 5, 6, 7	12.N	14.E	16	S2	* 320.00	_____	_____
102	1, 2, 3, 4, 5, 6, 7	12.N	14.E	23	E2W2, E2	* 480.00	_____	_____
103	1, 2, 3, 4, 5, 6	12.N	14.E	24	N2, S2SW4	* 400.00	_____	_____
104	1, 2, 3, 4, 5, 6	12.N	14.E	25	W2E2, N2SW4	* 240.00	_____	_____
105	1, 2, 3, 4, 5, 6	12.N	14.E	26	N2NW4, NE4	240.00	_____	_____
106	1, 2, 3, 4, 5, 6, 7	12.N	14.E	36	Lots 1 thru 12, NE4	640.80	_____	_____
107	1, 2, 3, 4, 5, 6, 8	12.N	15.E	5	Lots 3, 4, S2NW4, SW4	* 318.96	_____	_____
108	1, 2, 3, 4, 5, 6	12.N	15.E	6	Lots 1, 2, 3, 4, 5, SE4NW4, S2NE4, SE4SE4	339.01	_____	_____
109	1, 2, 3, 4, 5, 6	12.N	15.E	16	All	* 640.00	_____	_____
110	1, 2, 3, 4, 5, 6	12.N	15.E	19	S2SE4	80.00	_____	_____
111	1, 2, 3, 4, 5, 6	12.N	15.E	23	All	640.00	_____	_____
112	1, 2, 3, 4, 5, 6, 7	12.N	15.E	25	W2	320.00	_____	_____
113	1, 2, 3, 4, 5, 6, 7	12.N	15.E	26	All	640.00	_____	_____
114	1, 2, 3, 4, 5, 6	12.N	15.E	30	W2NE4, NW4SE4	120.00	_____	_____
115	1, 2, 3, 4, 5, 6, 7	12.N	15.E	36	All	* 640.00	_____	_____
116	1, 2, 3, 4, 5, 6	13.N	13.E	5	Lots 1, 2, S2NE4, S2SE4	* 239.84	_____	_____
117	1, 2, 3, 4, 5, 6	13.N	13.E	6	Lots 2 thru 7, SE4NW4, S2NE4, N2SE4, SW4SE4, E2SW4	* 553.45	_____	_____
118	1, 2, 3, 4, 5, 6	13.N	13.E	7	Lots 1, 2, 3, 4, E2W2, W2E2	475.36	_____	_____
119	1, 2, 3, 4, 5, 6, 7	13.N	13.E	8	NE4, N2SE4	* 240.00	_____	_____
120	1, 2, 3, 4, 5, 6, 7	13.N	13.E	9	S2	320.00	_____	_____
121	1, 2, 3, 4, 5, 6	13.N	13.E	16	All	640.00	_____	_____
122	1, 2, 3, 4, 5, 6	13.N	13.E	18	Lots 1, 2, 3, 4, E2NW4, NE4SW4	276.86	_____	_____
123	1, 2, 3, 4, 5, 6, 7	13.N	13.E	19	Lots 1, 2, 3, E2NE4, SE4	358.15	_____	_____

Tract	Stipulations	Twp	Rng	Sec	Description	Acres	Bid/Acre	Bidder
124	1, 2, 3, 4, 5, 6	13.N	13.E	20	W2SW4	80.00	_____	_____
125	1, 2, 3, 4, 5, 6	13.N	13.E	28	W2, N2NE4, SW4NE4	* 440.00	_____	_____
126	1, 2, 3, 4, 5, 6	13.N	13.E	29	N2, SE4	480.00	_____	_____
127	1, 2, 3, 4, 5, 6	13.N	13.E	30	Lot 4, SE4NW4, NE4, N2SE4, SW4SE4, E2SW4	439.71	_____	_____
128	1, 2, 3, 4, 5, 6	13.N	13.E	31	Lots 1, 2, 3, 4, E2NW4, NW4NE4, SW4SE4, SE4SW4	359.48	_____	_____
129	1, 2, 3, 4, 5, 6	13.N	13.E	32	All	640.00	_____	_____
130	1, 2, 3, 4, 5, 6	13.N	13.E	33	SE4NE4, SE4	200.00	_____	_____
131	1, 2, 3, 4, 5, 6	14.N	12.E	1	Lots 1, 2, 3, 4, S2N2, SE4	* 483.25	_____	_____
132	1, 2, 3, 4, 5, 6	14.N	12.E	12	NE4	* 160.00	_____	_____
133	1, 2, 3, 4, 5, 6	14.N	12.E	13	S2NW4, SW4NE4	120.00	_____	_____
134	1, 2, 3, 4, 5, 6	14.N	12.E	24	S2S2	160.00	_____	_____
135	1, 2, 3, 4, 5, 6, 10	14.N	12.E	25	N2, NW4SE4, NE4SW4	400.00	_____	_____
136	1, 2, 3, 4, 5, 6, 7, 10	14.N	12.E	36	NW4NW4, NE4NE4, S2NE4, S2	* 480.00	_____	_____
137	1, 2, 3, 4, 5, 6, 7	15.N	12.E	1	Lots 1, 2, 3, 4, S2N2, S2	638.68	_____	_____
138	1, 2, 3, 4, 5, 6, 7, 17	15.N	12.E	2	Lots 1, 2, S2NE4, SE4	* 318.78	_____	_____
139	1, 2, 3, 4, 5, 6, 7	15.N	12.E	5	SW4	160.00	_____	_____
140	1, 2, 3, 4, 5, 6, 7	15.N	12.E	24	S2	320.00	_____	_____
141	1, 2, 3, 4, 5, 6	15.N	12.E	25	E2, SW4	480.00	_____	_____
142	1, 2, 3, 4, 5, 6	15.N	12.E	36	All	* 640.00	_____	_____
143	1, 2, 3, 4, 5, 6	15.N	13.E	4	Lots 1, 2, S2NE4	* 160.90	_____	_____
144	1, 2, 3, 4, 5, 6	15.N	13.E	8	NE4NW4, S2N2, NW4NE4, SE4	* 400.00	_____	_____
145	1, 2, 3, 4, 5, 6	15.N	13.E	9	E2NW4, SW4NW4, SE4NE4, SW4	* 320.00	_____	_____
146	1, 2, 3, 4, 5, 6	15.N	13.E	10	SW4NW4	* 40.00	_____	_____
147	1, 2, 3, 4, 5, 6, 7	15.N	13.E	16	All	640.00	_____	_____
148	1, 2, 3, 4, 5, 6	15.N	13.E	36	Lots 1, 2, 3, 4, W2, W2E2	* 638.80	_____	_____

Lewis and Clark

149	2, 3, 4, 5, 6, 19	20.N	7.W	3	S2S2	160.00	_____	_____
150	2, 3, 4, 5, 6, 19	20.N	7.W	4	S2SE4, SE4SW4	120.00	_____	_____
151	2, 3, 4, 5, 6, 19	20.N	7.W	9	N2NE4, SW4NE4	120.00	_____	_____
152	2, 3, 4, 5, 6, 19	20.N	7.W	10	N2, SE4	480.00	_____	_____
153	2, 3, 4, 5, 6, 19	20.N	7.W	11	SW4NW4, W2SW4	120.00	_____	_____
154	2, 3, 4, 5, 6, 19	20.N	7.W	15	All	640.00	_____	_____
155	2, 3, 4, 5, 6, 19	20.N	7.W	16	All	640.00	_____	_____
156	2, 3, 4, 5, 6, 19	20.N	7.W	21	W2NW4, E2NE4, S2	480.00	_____	_____

Tract	Stipulations	Twp	Rng	Sec	Description	Acres	Bid/Acre	Bidder
157	2, 3, 4, 5, 6, 19	20.N	7.W	22	All	640.00	_____	_____
158	2, 3, 4, 5, 6, 19	20.N	7.W	23	All	640.00	_____	_____
McCone								
159	1, 2, 3, 4, 5, 6	17.N	44.E	36	All	* 640.00	_____	_____
160	1, 2, 3, 4, 5, 6	17.N	45.E	6	Lots 3, 4, 5, 6, 7, SE4NW4, E2SW4	* 325.32	_____	_____
161	1, 2, 3, 4, 5, 6	17.N	45.E	14	S2	320.00	_____	_____
162	1, 2, 3, 4, 5, 6	17.N	45.E	16	All	640.00	_____	_____
163	1, 2, 3, 4, 5, 6, 8	17.N	45.E	36	All	640.00	_____	_____
164	1, 2, 3, 4, 5, 6, 7	21.N	45.E	1	S2	320.00	_____	_____
165	1, 2, 3, 4, 5, 6	21.N	45.E	14	W2	320.00	_____	_____
166	1, 2, 3, 4, 5, 6, 7	21.N	45.E	16	S2SE4, SW4	240.00	_____	_____
167	1, 2, 3, 4, 5, 6, 7	21.N	45.E	36	All	640.00	_____	_____
168	1, 2, 3, 4, 5, 6, 7	21.N	46.E	16	All	640.00	_____	_____
169	1, 2, 3, 4, 5, 6	21.N	46.E	28	S2	320.00	_____	_____
170	1, 2, 3, 4, 5, 6	21.N	46.E	36	All	640.00	_____	_____
171	1, 2, 3, 4, 5, 6	21.N	47.E	16	All	640.00	_____	_____
172	1, 2, 3, 4, 5, 6, 11	21.N	47.E	36	All	640.00	_____	_____
173	1, 2, 3, 4, 5, 6, 7	22.N	45.E	16	All	640.00	_____	_____
174	1, 2, 3, 4, 5, 6, 7	22.N	45.E	26	SW4SW4	40.00	_____	_____
175	1, 2, 3, 4, 5, 6, 7	22.N	45.E	27	E2SW4	80.00	_____	_____
176	1, 2, 3, 4, 5, 6, 7	22.N	45.E	33	E2NE4, NE4SE4	120.00	_____	_____
177	1, 2, 3, 4, 5, 6, 7	22.N	45.E	34	NW4, NW4NE4, S2NE4, S2	600.00	_____	_____
178	1, 2, 3, 4, 5, 6, 7	22.N	45.E	35	W2NW4	80.00	_____	_____
179	1, 2, 3, 4, 5, 6, 7	22.N	45.E	36	E2W2, E2	480.00	_____	_____
180	1, 2, 3, 4, 5, 6, 7, 9	23.N	45.E	16	All	640.00	_____	_____
181	1, 2, 3, 4, 5, 6	23.N	45.E	36	W2	320.00	_____	_____
182	1, 2, 3, 4, 5, 6	23.N	46.E	16	All	640.00	_____	_____
183	1, 2, 3, 4, 5, 6, 7	23.N	46.E	36	All	640.00	_____	_____
184	1, 2, 3, 4, 5, 6, 7	23.N	47.E	16	N2NW4, SE4NW4, NE4, S2	600.00	_____	_____
185	1, 2, 3, 4, 5, 6	23.N	47.E	36	All	640.00	_____	_____
186	1, 2, 3, 4, 5, 6, 7, 9	24.N	45.E	16	All	640.00	_____	_____
187	1, 2, 3, 4, 5, 6, 7	24.N	45.E	36	N2, SW4SW4	360.00	_____	_____
188	1, 2, 3, 4, 5, 6, 7	24.N	46.E	16	N2, NW4SE4, SW4	520.00	_____	_____

Tract	Stipulations	Twp	Rng	Sec	Description	Acres	Bid/Acre	Bidder
189	1, 2, 3, 4, 5, 6	24.N	46.E	36	S2	320.00	_____	_____
190	1, 2, 3, 4, 5, 6	24.N	47.E	16	SE4NW4	40.00	_____	_____
191	1, 2, 3, 4, 5, 6, 8	24.N	47.E	36	E2SE4	80.00	_____	_____
192	1, 2, 3, 4, 5, 6, 7	25.N	45.E	16	All	640.00	_____	_____
193	1, 2, 3, 4, 5, 6, 7	25.N	45.E	36	All	640.00	_____	_____
194	1, 2, 3, 4, 5, 6, 7	25.N	46.E	16	All	640.00	_____	_____
195	1, 2, 3, 4, 5, 6	25.N	46.E	36	All	640.00	_____	_____
196	1, 2, 3, 4, 5, 6	25.N	47.E	4	SW4NW4, NW4SW4	80.00	_____	_____
197	1, 2, 3, 4, 5, 6, 8	25.N	47.E	5	Lots 2, 3, 4, S2NE4, SE4NW4	240.82	_____	_____
198	1, 2, 3, 4, 5, 6, 8	25.N	47.E	6	Lots 1, 2, 4, 5, SE4NW4, N2SE4, SW4NE4	317.78	_____	_____
199	1, 2, 3, 4, 5, 6	25.N	47.E	7	Lot 4, SE4SW4	78.74	_____	_____
200	1, 2, 3, 4, 5, 6	25.N	47.E	16	All	640.00	_____	_____
201	1, 2, 3, 4, 5, 6, 7	25.N	47.E	18	Lot 1, NE4NW4, NE4	238.81	_____	_____
202	1, 2, 3, 4, 5, 6	25.N	47.E	27	S2SE4	80.00	_____	_____
203	1, 2, 3, 4, 5, 6	25.N	47.E	34	NE4	160.00	_____	_____
204	1, 2, 3, 4, 5, 6	25.N	47.E	35	S2NW4	80.00	_____	_____
205	1, 2, 3, 4, 5, 6	25.N	47.E	36	All	640.00	_____	_____
206	1, 2, 3, 4, 5, 6, 7	26.N	45.E	36	All	640.00	_____	_____
207	1, 2, 3, 4, 5, 6, 7	26.N	46.E	16	All	640.00	_____	_____
208	1, 2, 3, 4, 5, 6, 7, 8	26.N	46.E	36	All	640.00	_____	_____
209	1, 2, 3, 4, 5, 6, 8	26.N	47.E	13	NE4	160.00	_____	_____
210	1, 2, 3, 4, 5, 6, 7	26.N	47.E	16	All	640.00	_____	_____
211	1, 2, 3, 4, 5, 6, 7	26.N	47.E	36	All	640.00	_____	_____
Prairie								
212	1, 2, 3, 4, 5, 6, 9	14.N	45.E	16	All	640.00	_____	_____
213	1, 2, 3, 4, 5, 6	14.N	45.E	24	W2	320.00	_____	_____
214	1, 2, 3, 4, 5, 6	14.N	45.E	35	S2SW4	80.00	_____	_____
215	1, 2, 3, 4, 5, 6	14.N	45.E	36	All	640.00	_____	_____
216	1, 2, 3, 4, 5, 6	15.N	45.E	16	All	640.00	_____	_____
217	1, 2, 3, 4, 5, 6	15.N	45.E	36	All	640.00	_____	_____
218	1, 2, 3, 4, 5, 6	16.N	45.E	16	All	640.00	_____	_____
219	1, 2, 3, 4, 5, 6	16.N	45.E	36	All	640.00	_____	_____

Tract	Stipulations	Twp	Rng	Sec	Description	Acres	Bid/Acre	Bidder
Richland								
220	1, 2, 3, 4, 5, 6	25.N	56.E	16	All	640.00	_____	_____
221	1, 2, 3, 4, 5, 6, 12, 14	26.N	59.E	13	Missouri Riverbed and related acreage	32.00	_____	_____
Rosebud								
222	1, 2, 3, 4, 5, 6, 7	13.N	40.E	36	All	640.00	_____	_____
223	1, 2, 3, 4, 5, 6	13.N	41.E	36	All	640.00	_____	_____
224	1, 2, 3, 4, 5, 6	13.N	42.E	36	All	640.00	_____	_____
Sheridan								
225	1, 2, 3, 4, 5, 6, 8, 16	35.N	58.E	36	Lots 1 thru 12, W2	* 866.52	_____	_____
Toole								
226	1, 2, 3, 4, 5, 6	35.N	1.W	30	Lots 1, 2, 3, 4, SE4SW4, below the base of the Mission Canyon formation	186.44	_____	_____
Valley								
227	1, 2, 3, 4, 5, 6, 7	33.N	39.E	3	All	640.00	_____	_____
228	1, 2, 3, 4, 5, 6	33.N	39.E	5	E2, SW4	480.00	_____	_____
229	2, 3, 4, 5, 6, 13, 14, 18	33.N	39.E	11	Lots 8, 9, 10, 11, 12, W2NW4, SW4SE4, SW4 (subject to 70-16-201, MCA)	450.65	_____	_____
230	1, 2, 3, 4, 5, 6	33.N	39.E	16	N2, N2SE4, SW4	560.00	_____	_____
231	1, 2, 3, 4, 5, 6	33.N	39.E	23	All	640.00	_____	_____
232	1, 2, 3, 4, 5, 6	33.N	39.E	28	All	640.00	_____	_____
233	1, 2, 3, 4, 5, 6	33.N	39.E	30	Lots 1 thru 12, E2	791.20	_____	_____
234	2, 3, 4, 5, 6, 13, 14, 18	33.N	39.E	36	Lots 1 thru 10, NW4, SW4NE4, Porcupine Creek	433.30	_____	_____
235	1, 2, 3, 4, 5, 6, 11	33.N	40.E	1	Lots 1, 2, 3, 4, S2N2, S2	638.96	_____	_____
236	1, 2, 3, 4, 5, 6	33.N	40.E	3	Lots 1, 2, 3, 4, S2N2, S2	638.96	_____	_____
237	1, 2, 3, 4, 5, 6	33.N	40.E	5	Lots 1, 2, 3, 4, S2N2, S2	* 639.36	_____	_____
238	1, 2, 3, 4, 5, 6	34.N	40.E	16	S2NE4, SE4, S2SW4	* 320.00	_____	_____
239	1, 2, 3, 4, 5, 6, 11	34.N	40.E	36	All	640.00	_____	_____
240	1, 2, 3, 4, 5, 6	34.N	43.E	4	Lots 1, 2, 3, 4, S2N2, S2	* 638.40	_____	_____
241	1, 2, 3, 4, 5, 6	34.N	43.E	9	SE4	160.00	_____	_____
242	1, 2, 3, 4, 5, 6	34.N	43.E	15	All	* 640.00	_____	_____
243	1, 2, 3, 4, 5, 6	34.N	43.E	17	W2	320.00	_____	_____
244	1, 2, 3, 4, 5, 6	34.N	43.E	25	All	* 640.00	_____	_____
245	1, 2, 3, 4, 5, 6	34.N	43.E	36	All	640.00	_____	_____

Tract	Stipulations	Twp	Rng	Sec	Description	Acres	Bid/Acre	Bidder
246	1, 2, 3, 4, 5, 6	35.N	39.E	16	All	640.00	_____	_____
247	1, 2, 3, 4, 5, 6	35.N	40.E	16	All	640.00	_____	_____
248	1, 2, 3, 4, 5, 6	35.N	40.E	36	All	640.00	_____	_____
249	1, 2, 3, 4, 5, 6	35.N	42.E	16	NW4NE4, SE4SE4	* 80.00	_____	_____
250	1, 2, 3, 4, 5, 6, 8	35.N	42.E	30	S2NE4, SE4, NE4SW4	280.00	_____	_____
251	1, 2, 3, 4, 5, 6	35.N	43.E	4	Lots 1, 2, S2NE4	160.04	_____	_____
252	1, 2, 3, 4, 5, 6, 8	35.N	43.E	7	Lots 3, 4, SE4, E2SW4	308.04	_____	_____
253	1, 2, 3, 4, 5, 6	35.N	43.E	16	All	640.00	_____	_____
254	1, 2, 3, 4, 5, 6, 8	35.N	43.E	18	Lots 1, 2, E2NW4, NE4	308.38	_____	_____
255	1, 2, 3, 4, 5, 6	35.N	43.E	21	N2, SE4, N2SW4	560.00	_____	_____
256	1, 2, 3, 4, 5, 6	35.N	43.E	30	Lots 1, 2, 3, 4, E2W2, E2	* 619.24	_____	_____
257	1, 2, 3, 4, 5, 6	35.N	43.E	32	E2	* 320.00	_____	_____
258	1, 2, 3, 4, 5, 6	35.N	43.E	33	NE4, SW4	* 320.00	_____	_____
259	1, 2, 3, 4, 5, 6	35.N	43.E	34	All	* 640.00	_____	_____
260	1, 2, 3, 4, 5, 6, 8	35.N	43.E	36	All	640.00	_____	_____
261	1, 2, 3, 4, 5, 6	36.N	38.E	36	All	640.00	_____	_____
262	1, 2, 3, 4, 5, 6, 7	36.N	40.E	36	All	* 640.00	_____	_____
263	1, 2, 3, 4, 5, 6, 7	36.N	42.E	16	SE4, E2SW4	240.00	_____	_____
264	1, 2, 3, 4, 5, 6, 7	37.N	39.E	36	All	640.00	_____	_____
265	1, 2, 3, 4, 5, 6, 7	37.N	42.E	36	E2, S2SW4	400.00	_____	_____
Wheatland								
266	1, 2, 3, 4, 5, 6	10.N	16.E	2	Lots 3, 4, S2NW4	158.55	_____	_____
267	1, 2, 3, 4, 5, 6, 7	10.N	16.E	16	All	640.00	_____	_____
268	1, 2, 3, 4, 5, 6	10.N	16.E	36	All	640.00	_____	_____
269	1, 2, 3, 4, 5, 6	10.N	17.E	16	All	640.00	_____	_____
270	1, 2, 3, 4, 5, 6	11.N	15.E	26	SE4	160.00	_____	_____
271	1, 2, 3, 4, 5, 6	11.N	15.E	36	All	640.00	_____	_____
272	1, 2, 3, 4, 5, 6	11.N	16.E	36	All	* 640.00	_____	_____
Yellowstone								
273	1, 2, 3, 4, 5, 6, 12, 14	2.S	24.E	14	Yellowstone Riverbed and related acreage	139.00	_____	_____
274	1, 2, 3, 4, 5, 6, 12, 14	2.S	24.E	23	Yellowstone Riverbed and related acreage	105.00	_____	_____
275	1, 2, 3, 4, 5, 6, 7	2.S	24.E	36	All	* 640.00	_____	_____

* Part or all of tract is not state-owned surface

Total Tracts	275
Total Acres	116,663.05

Additional lease stipulations are listed on the following pages. The Stipulations column on the sale list identifies which stipulations will be attached to each tract.

Sight drafts will not be accepted. The State Board of Land Commissioners reserves the right to reject any and all bids. All payments are due within ten days after the date of sale.

Individuals with disabilities needing assistance or special services, please call Julie David at (406) 444-4576 at least one week prior to the sale.

STATE BOARD OF LAND COMMISSIONERS

State of Montana
Oil & Gas Lease Sale - March 6, 2012
Stipulations

- 1 Lessee shall notify and obtain approval from the Department's Trust Land Management Division (TLMD) prior to constructing well pads, roads, power lines, and related facilities that may require surface disturbance on the tract. Lessee shall comply with any mitigation measures stipulated in TLMD's approval.
- 2 Prior to the drilling of any well, lessee shall send one copy of the well prognosis, including Form 22 "Application for Permit" to the Department's Trust Land Management Division (TLMD). After a well is drilled and completed, lessee shall send one copy of all logs run, Form 4A "Completion Report", and geologic report to TLMD. A copy of Form 2 "Sundry Notice and Report of Wells" or other appropriate Board of Oil and Gas Conservation form shall be sent to TLMD whenever any subsequent change in well status or operator is intended or has occurred. Lessee shall also notify and obtain approval from the TLMD prior to plugging a well on the lease premises.

Issuance of this lease in no way commits the Land Board to approval of coal bed methane production on this lease. Any coal bed methane extraction wells would require subsequent review and approval by the board.
- 3 The TLMD will complete an initial review for cultural resources and, where applicable, paleontological resources of the area intended for disturbance and may require a resources inventory. Based on the results of the inventory, the TLMD may restrict surface activity for the purpose of protecting significant resources located on the lease premises.
- 4 The lessee shall be responsible for controlling any noxious weeds introduced by lessee's activity on State-owned land and shall prevent or eradicate the spread of those noxious weeds onto land adjoining the lease premises.
- 5 The definitions of "oil" and "gas" provided in 82-1-111, MCA, do not apply to this lease for royalty calculation purposes.
- 6 If the State does not own the surface, the lessee must contact the owner of the surface in writing at least 30 days prior to any surface activity. A copy of the correspondence shall be sent to TLMD.
- 7 Due to unstable soil conditions on this tract and/or topography that is rough and/or steep, surface use may be restricted or denied. Seismic activity may be restricted to poltershots.
- 8 The lessee is responsible to pay for all damages, including penalties and charges assessed by the USDA-CFSA on CRP lands, as a result of drilling and production on the tract.
- 9 Active sage grouse lek(s) have been identified on or adjacent to this tract. No activities shall occur on the tract until the proposed action has been approved in writing by the Director of the Department. If surface activity is proposed on the tract, the department will consult with the Director of the Department of Fish, Wildlife and Parks for his or her comments, concerns and recommendations. Additional mitigation measures may be required, including no-surface-occupancy buffers and/or timing restrictions, which may encompass part or all of the tract.
- 10 Unless otherwise approved by the Department in writing, wells and related surface infrastructure, including new road construction, are prohibited within 1/4 mile of the mean high water mark of a navigable river, lake or reservoir, including direct tributary streams of navigable waterways, on or adjacent to this tract. No surface occupancy is allowed within the bed of a river, stream, lake or reservoir, islands and accretions or abandoned channels.
- 11 Due to the floodplain/wetlands area(s), surface use may be restricted or denied.
- 12 This tract contains navigable riverbeds. No surface occupancy is allowed within the bed of the navigable river, abandoned channels, or on islands and accretions. In addition, upon completion of a successful well, where river title is disputed, the lessee will file an interpleader action under Rule 22, M.R.Civ.P. in the Montana District Court, or other court having jurisdiction, in which the leased lands are located for all acreage within the lease in which the title is disputed. The lessee shall name all potential royalty claimants as defendants.

- 13 The State, as a riparian owner, may have an ownership claim to adjacent river/stream/lake/reservoir bed(s) and related acreage in this section. Upon completion of a successful well, where river, stream, lake, or reservoir title or adjoining land title is disputed, the lessee will file an interpleader action under Rule 22, M.R.Civ.P. in the Montana District Court, or other court having jurisdiction, in which the leased lands are located for all acreage within the lease in which the title is disputed. The lessee shall name all potential royalty claimants as defendants.
- 14 If the lessee completes a successful oil and/or gas well, and if land title is disputed, the lessee shall fund professional land surveys as needed to determine the location and acreage encompassed by the spacing and/or pooling unit and the state lease acreage within that unit. Surveys shall be conducted by a licensed land surveyor acceptable to the Department, and shall be prepared pursuant to survey requirements provided by the Department.
- 15 Residential and/or commercial development exists on this tract. Surface utilization may be restricted.
- 16 Due to existing surface uses (such as center pivots, wheel lines, etc.) development on this tract may be restricted.
- 17 A portion of this tract is subject to an oil and gas subordination agreement between the U.S. and the State.
- 18 This lease includes areas that may be environmentally sensitive. Therefore, if the lessee intends to conduct any activities on the lease premises, the lessee shall submit to TLMD one copy of an Operating Plan or Amendment to an existing Operating Plan, describing in detail the proposed activities. No activities shall occur on the tract until the Operating Plan or Amendments have been approved in writing by the Director of the Department. TLMD shall review the Operating Plan or Amendment and notify the lessee if the Plan or Amendment is approved or disapproved.

After an opportunity for an informal hearing with the lessee, surface activity may be denied or restricted on all or portions of any tract if the Director determines in writing that the proposed surface activity will be detrimental to trust resources and therefore not in the best interests of the trust.

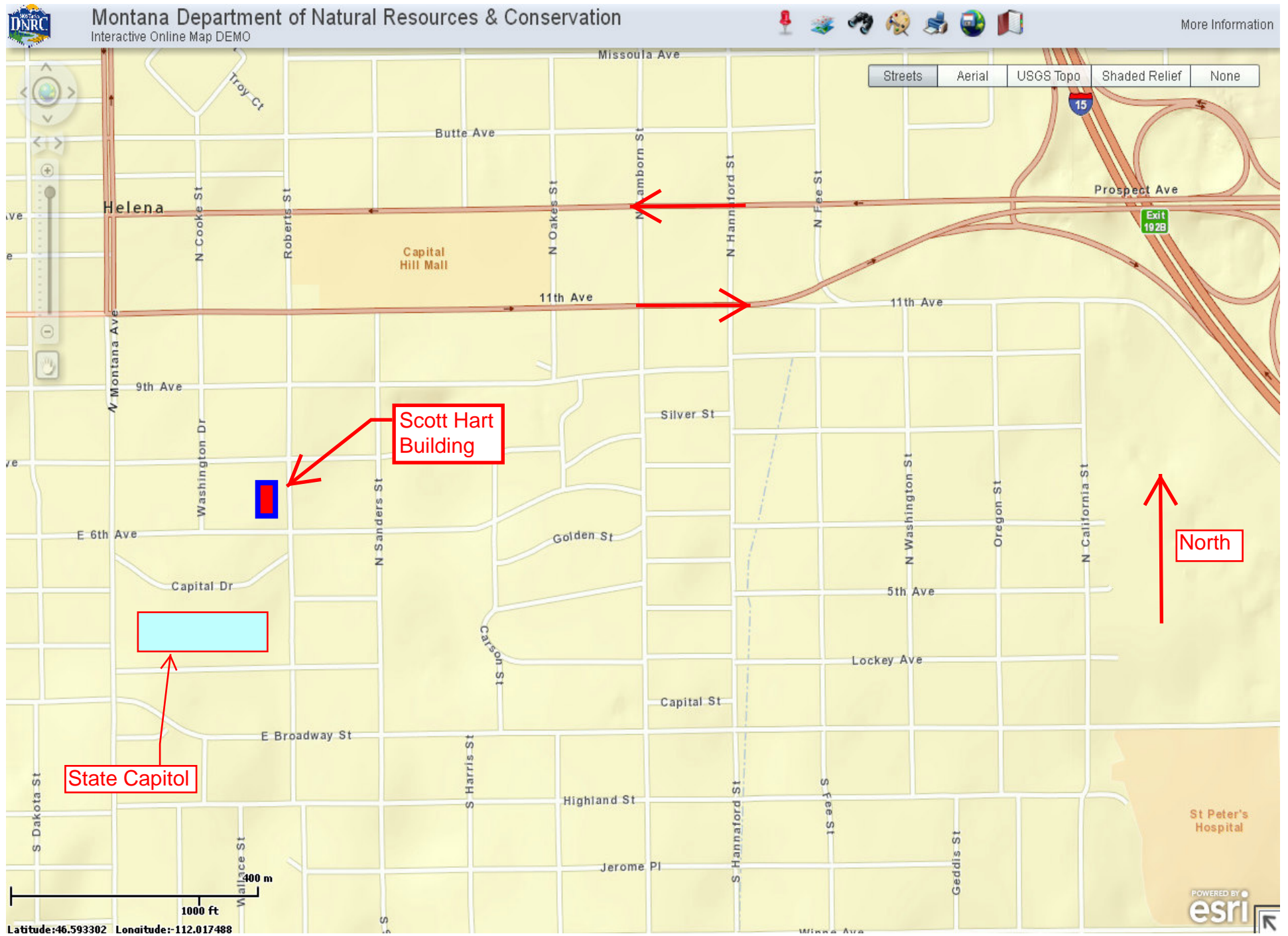
- 19 This lease is located near the Rocky Mountain Front and includes areas that are environmentally sensitive. Therefore, except as otherwise provided below, the lessee shall not conduct any surface operations on the lease premises. If the lessee determines that surface operation on the lease premises may be required, the lessee shall submit a proposed Operating Plan or Amendment to an existing Operating Plan to the State Board of Land Commissioners describing in detail the proposed operations. No surface activities shall occur on the lease premises unless and until the Operating Plan or Amendment is approved by the Board. In determining whether to approve the proposed Operating Plan or Amendment, the following provisions shall apply:
 - 1) If the lessee proposes an activity that does not entail any significant surface disturbance, the Board may approve the same after completion of the appropriate environmental review in accordance with the Montana Environmental Policy Act (MEPA) and an opportunity for public comment on the proposed activity has been provided.
 - 2) Before the Board approves any proposed activity on the lease premises that entails a significant surface disturbance, an environmental impact statement (EIS) shall be completed in accordance with MEPA. The EIS shall analyze the potential impacts of alternative and future potential levels of oil and gas development and extraction on an ecosystem scale as the ecosystem is defined by the "Limits of Acceptable Change - Bob Marshall Wilderness Complex" adopted by the Montana Department of Fish, Wildlife and Parks in December 1991. The analysis shall consider all relevant information, which may include, but is not limited to, existing environmental reviews and management plans. Public involvement in the environmental review process shall be actively solicited by the preparer of the environmental review document and shall include, at minimum, adequately noticed public meetings in at least three communities including Great Falls and Helena.
 - 3) The proposed surface activity shall adhere to the "Interagency Rocky Mountain Front, Wildlife Monitoring/Evaluation Program, Management Guidelines for Selected Species" adopted by the Montana Department of Fish, Wildlife and Parks in September 1987, or any successor guidelines thereto.
 - 4) The Board may refuse to approve any proposed surface operations if it determines that they do not constitute the best use of trust resources or are not in the best interest of the State of Montana.

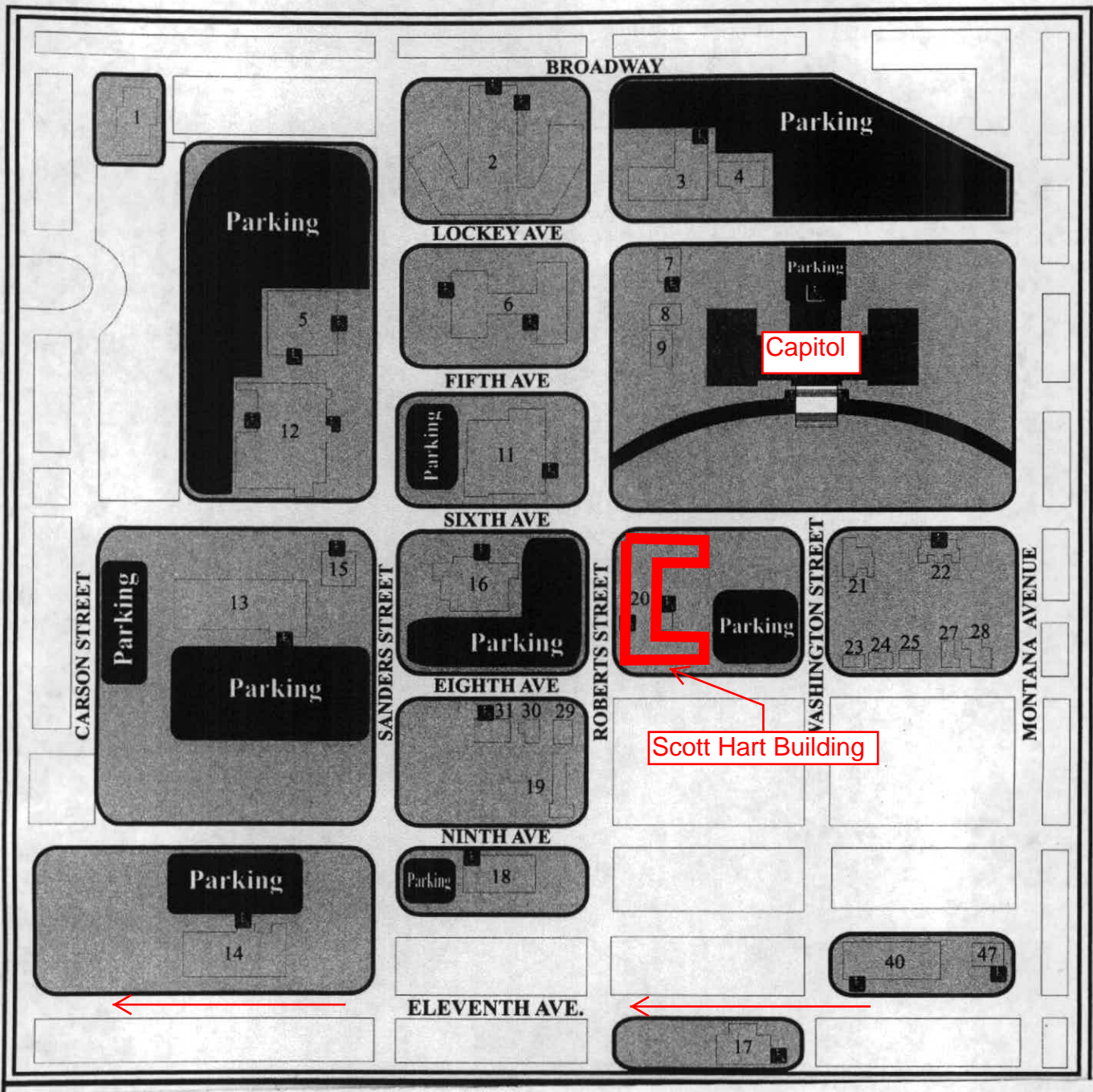
20 This lease includes the navigable Smith River and/or lands within the adjoining section which may be environmentally sensitive. Therefore, if the lessee intends to conduct any activities on the lease premises, the lessee shall submit to TLMD one copy of an Operating Plan or Amendment to an existing Operating Plan, describing in detail the proposed activities. No activities shall occur on the tract until the Operating Plan or Amendments have been approved in writing by the Director of the Department. TLMD shall review the Operating Plan or Amendment and notify the lessee if the Plan or Amendment is approved or disapproved.

Public involvement in the review process shall be actively solicited by the preparer of the environmental review document.

Unless otherwise approved by the Director in writing, wells and related surface infrastructure, including new road construction, are prohibited within 1/4 mile of the mean high water mark of the river, including direct tributary streams of the river, on or adjacent to this tract. No surface occupancy is allowed within the bed of the river or streams, islands and accretions or abandoned channels.

After an opportunity for an informal hearing with the lessee, surface activity may be denied or restricted on all or portions of any tract if the Director determines in writing that the proposed surface activity will be detrimental to trust resources and therefore not in the best interests of the trust. The Director's decision may be appealed to the State Land Board.





BROADWAY

Parking

LOCKEY AVE

Capitol

FIFTH AVE

Parking

SIXTH AVE

CARSON STREET

Parking

Parking

SANDERS STREET

EIGHTH AVE

Parking

ROBERTS STREET

20

Parking

WASHINGTON STREET

21

22

23 24 25

27 28

MONTANA AVENUE

NINTH AVE

Parking

18

Parking

14

ELEVENTH AVE.

40

47

17

North



DEPARTMENT OF NATURAL RESOURCES
AND CONSERVATION

Trust Land Management Division



BRIAN SCHWEITZER, GOVERNOR

1625 ELEVENTH AVENUE

DIRECTOR'S OFFICE (406) 444-2074
TELEFAX NUMBER (406) 444-2684

PO BOX 201601
HELENA, MONTANA 59620-1601

TO ALL INTERESTED PARTIES:

RE: June 5, 2012 Oil and Gas Lease Sale

In order to give as much advance notice as possible, please be advised that the date of the June 2012 Oil and Gas Lease Sale has been set for **TUESDAY, JUNE 5, 2012**, at 9:00 A.M. in the auditorium of the Department of Transportation building at 2701 Prospect Avenue, Helena, Montana, east of the interstate highway. Please call the Department of Natural Resources and Conservation for detailed directions, if necessary.

The deadline filing date for submitting applications on tracts to be nominated for the sale in June is 5:00pm on March 20, 2012. Applications must be received in this office by that date. If you have any questions, please contact me at jdavid@mt.gov or (406) 444-4576.

Julie David, Supervisor
Mineral Leasing Section
Minerals Management Bureau