

State of Montana
Oil & Gas Lease Sale – September 7, 2011
Preliminary Lease Sale List

App#	Map Location	Twp	Rge	Sec	Description	Acres
Big Horn		1				
5460		8.S	40.E	16	All, below the base of the Fort Union formation	640.00
5461		8.S	40.E	25	SE4NE4, part N2SE4, part NE4SW4, below the base of the Fort Union formation	102.88
5462		8.S	40.E	36	All, below the base of the Fort Union formation	640.00
5463		8.S	41.E	16	All, below the base of the Fort Union formation	640.00
5464		8.S	41.E	36	All, below the base of the Fort Union formation	640.00
5430		9.S	40.E	11	S2SE4	80.00
5431		9.S	40.E	12	NE4, S2	480.00
5432		9.S	40.E	14	Part NE4, part NE4SW4, part N2SE4	228.13
5433		9.S	40.E	15	W2SW4, part E2SW4, W2SE4	185.29
5434		9.S	40.E	16	All	640.00
5466		9.S	40.E	22	N2NE4, SE4NE4, E2W2 less 137.09 acres, tract in E2, below the base of the Fort Union formation	256.92
5465		9.S	40.E	22	Tract in E2W2, below the base of the Fort Union formation	137.09
5467		9.S	40.E	23	NW4NW4, tracts in SW4NW4, NE4NW4, below the base of the Fort Union formation	59.44
5468		9.S	40.E	26	Tract in W2NW4, below the base of the Fort Union formation	4.66
5469		9.S	40.E	27	Tracts in NW4NE4, S2NE4, NE4NE4, NW4SE4, NE4SE4, SE4SE4, SW4SE4, below the base of the Fort Union formation	82.08
5470		9.S	40.E	36	Lots 1, 2, 3, 4, N2, N2S2, below the base of the Fort Union formation	571.88
5471		9.S	41.E	10	SE4SW4, below the base of the Fort Union formation	40.00
5472		9.S	41.E	16	All, below the base of the Fort Union formation	640.00
5473		9.S	41.E	36	Lots 1, 2, 3, 4, N2, N2S2, below the base of the Fort Union formation	581.16
5435		9.S	42.E	16	All	640.00
5474		9.S	42.E	36	Lots 1, 2, 3, 4, N2, N2S2, below the base of the Fort Union formation	641.36
Blaine		2				
5383		31.N	20.E	23	NW4SW4	40.00
5384		31.N	20.E	26	NW4SE4, S2S2	* 200.00
5385		31.N	20.E	27	N2N2	160.00
5386		31.N	20.E	33	SE4NE4, SE4	200.00
5387		31.N	20.E	34	S2NW4, SW4NE4, NW4SW4	* 160.00
5388		31.N	20.E	35	N2NW4, NW4NE4	120.00
Carbon		3,4				
5349		4.S	24.E	36	All	* 640.00
5339		7.S	21.E	16	All	640.00
5340		7.S	21.E	17	NE4NW4, S2NW4, NE4, S2	600.00
5341		7.S	22.E	16	All	640.00
5342		7.S	23.E	36	All	640.00
5343		8.S	23.E	16	All	640.00
5344		8.S	23.E	36	All	640.00
5345		9.S	21.E	16	All	640.00
5346		9.S	23.E	16	All	640.00
5347		9.S	24.E	16	All	640.00

App#	Map Location	Twp	Rge	Sec	Description	Acres	
Cascade		5					
5001		16.N	5.E	16	All	640.00	
5002		16.N	6.E	16	All	640.00	
5003		16.N	6.E	36	NW4	* 160.00	
5004		16.N	7.E	16	All	* 640.00	
5005		16.N	7.E	36	Lots 1 thru 8, E2	652.80	
5006		17.N	5.E	16	All	* 640.00	
5007		17.N	5.E	36	Lots 1, 2, 4, W2W2, NE4NW4, SW4SE4, SE4SW4	* 396.40	
5008		17.N	6.E	16	W2NW4, E2E2, SW4	* 400.00	
5009		17.N	7.E	16	All	* 640.00	
5010		17.N	7.E	36	NW4, NE4NE4, W2SE4, N2SW4	360.00	
5011		18.N	5.E	3	Lots 1, 2, S2NE4, SE4	* 321.11	
5012		18.N	5.E	16	All	* 640.00	
5013		18.N	5.E	36	W2, W2SE4, SE4SE4, less patented county road	* 429.80	
5014		18.N	6.E	16	W2	* 320.00	
5015		18.N	6.E	36	NE4NW4, W2W2	* 200.00	
5016		18.N	7.E	16	All, less patented RR R/W	* 632.92	
5017		18.N	7.E	29	S2SE4, SE4SW4	120.00	
5018		18.N	7.E	31	E2NW4, NE4	240.00	
5019		18.N	7.E	32	N2NW4, SW4NW4, NW4NE4	160.00	
5020		19.N	5.E	1	Lots 1, 2, 3, 4, S2NE4, NE4SE4	* 278.80	
5021		19.N	5.E	2	SW4NE4, W2SE4, S2SW4	* 200.00	
5022		19.N	5.E	3	S2SE4, SE4SW4	* 120.00	
5023		19.N	5.E	10	E2W2, NE4, N2SE4, SW4SE4, SW4SW4	* 480.00	
5024		19.N	5.E	11	NW4, N2SW4	* 240.00	
5025		19.N	5.E	15	W2, W2E2	* 480.00	
5026		19.N	5.E	16	All	* 640.00	
5027		19.N	5.E	17	SE4	160.00	
5028		19.N	5.E	20	E2	320.00	
5029		19.N	5.E	21	N2, SW4	* 480.00	
5030		19.N	5.E	22	NW4	* 160.00	
5031		19.N	5.E	27	NW4	* 160.00	
5032		19.N	5.E	28	E2	* 320.00	
5033		19.N	5.E	33	N2, N2SE4	* 400.00	
5034		19.N	5.E	34	S2	* 320.00	
5035		19.N	5.E	36	All	* 640.00	
5036		19.N	6.E	6	Lots 1, 2, 6, 7, S2NE4, SE4, E2SW4	* 519.95	
5037		19.N	6.E	16	All	* 564.40	
5038		19.N	6.E	36	S2S2, NW4SW4	* 201.50	
5039		19.N	7.E	16	N2, N2SE4, SW4SE4, SW4	* 600.00	
5040		19.N	7.E	36	Lots 1, 2, NW4, W2NE4, S2	* 645.38	
5041		19.N	8.E	16	All	640.00	
5042		19.N	8.E	24	N2NE4	80.00	
5043		19.N	8.E	36	Lots 1, 2, 3, 4, W2, W2E2	643.76	
Chouteau		5,6,7,8,9					
5044		19.N	10.E	1	Lots 2, 3, 4, SW4NW4, S2S2, NW4SW4	* 359.62	
5045		19.N	10.E	2	Lots 1, 2, 3, 4, S2N2, N2SE4, NE4SW4	* 439.20	
5046		19.N	10.E	11	N2SE4, SE4SE4	120.00	
5047		19.N	10.E	12	NE4NW4, S2NW4, NE4, SW4	440.00	
5395		23.N	4.E	16	All	* 640.00	
5396		23.N	4.E	36	All	* 640.00	
5389		24.N	7.E	9	W2NE4	80.00	
5390		24.N	8.E	6	Lots 1 thru 7, SE4NW4, S2NE4, SE4, E2SW4	* 650.04	
5391		24.N	8.E	7	E2	320.00	
5392		24.N	8.E	8	SE4SE4	40.00	
5393		24.N	8.E	16	All	* 640.00	
5394		24.N	8.E	17	NE4NE4, Teton Riverbed and related acreage	45.00	
5397		25.N	3.E	16	All	640.00	

App#	Map Location	Twp	Rge	Sec	Description	Acres
5398		25.N	3.E	22	S2NW4, S2SE4, SW4, Teton Riverbed and related acreage	326.00
5399		25.N	3.E	36	All	640.00
5400		25.N	4.E	6	Lots 1 thru 7, SE4NW4, S2NE4, SE4, E2SW4	635.98
5401		25.N	4.E	16	All	640.00
5402		25.N	4.E	25	NW4, NW4NE4, S2NE4, S2	* 600.00
5403		26.N	3.E	16	All	* 640.00
5404		26.N	4.E	36	All	640.00
5405		26.N	11.E	16	Lots 2, 3, 6, 7, W2, Missouri Riverbed and related acreage	* 481.87
5406		26.N	11.E	35	All	640.00
5407		26.N	11.E	36	All	* 640.00
5408		27.N	4.E	16	All	* 640.00
5409		27.N	4.E	18	Lots 1, 2, 3, 4, E2W2, E2	563.04
5410		27.N	4.E	36	All	640.00
5411		27.N	5.E	16	All	640.00
5412		27.N	5.E	36	All	640.00
5413		27.N	6.E	6	Lots 1 thru 7, SE4NW4, S2NE4, SE4, E2SW4	* 635.57
5414		27.N	6.E	16	All	640.00
5415		27.N	6.E	36	All	640.00
5416		27.N	7.E	16	All	640.00
5417		27.N	7.E	36	All	640.00
5418		27.N	8.E	16	All	640.00
5419		27.N	8.E	36	All	* 640.00
5420		27.N	9.E	24	SE4	160.00
5421		27.N	9.E	25	SE4	160.00
5424		29.N	9.E	16	All	640.00
5425		29.N	9.E	36	All	640.00
5426		29.N	10.E	16	All	640.00
5427		29.N	10.E	36	All	640.00
5428		29.N	11.E	16	All	* 640.00
5429		29.N	11.E	36	All	* 640.00

Daniels 10,11

5496		34.N	47.E	24	NW4	160.00
5497		34.N	49.E	36	NE4NW4, NW4NE4	80.00
5495		37.N	43.E	4	Lot 8, S2	360.00

Dawson 12

5350		16.N	51.E	2	S2	* 320.00
5351		16.N	51.E	16	All	640.00
5352		16.N	51.E	24	W2NE4, NW4, W2SW4	320.00
5353		16.N	51.E	36	All	640.00
5354		16.N	52.E	6	Lots 2, 3, 4, S2N2	326.05
5355		16.N	52.E	16	All	640.00
5356		16.N	52.E	36	Lots 1, 2, 3, 4, W2, W2E2	642.92
5357		17.N	50.E	16	All	640.00
5358		17.N	50.E	36	All	* 640.00
5359		17.N	51.E	10	E2E2, SW4SE4, SE4SW4, N2SW4	* 320.00
5360		17.N	51.E	12	NW4, W2NE4, NW4SE4, NE4SW4	320.00
5361		17.N	51.E	16	All	640.00
5362		17.N	51.E	34	W2	320.00
5363		17.N	51.E	36	All	640.00
5364		18.N	50.E	16	All	640.00
5365		18.N	50.E	36	E2	320.00
5366		18.N	51.E	2	Lots 1, 2, 3, 4, S2N2	320.32
5367		18.N	51.E	14	S2	320.00
5368		18.N	51.E	16	All	640.00
5369		18.N	51.E	20	S2NW4, W2SE4, SW4	320.00

App#	Map Location	Twp	Rge	Sec	Description	Acres
5370		18.N	51.E	22	S2	320.00
5371		18.N	51.E	36	All	* 640.00
5372		19.N	50.E	2	Lots 1, 2, 3, 4, S2N2	317.20
5373		19.N	50.E	16	All	640.00
5374		19.N	50.E	36	All	640.00
5375		20.N	50.E	10	All	640.00
5376		20.N	50.E	16	E2NW4, NE4, S2SW4	320.00
5377		20.N	50.E	36	All	640.00
Fergus		5,13				
5436		15.N	20.E	16	All	640.00
5437		15.N	20.E	36	All	640.00
5438		15.N	21.E	3	S2NW4, N2SW4	160.00
5439		15.N	21.E	16	All	* 640.00
5440		15.N	21.E	36	All	640.00
5441		15.N	22.E	16	All	640.00
5442		15.N	22.E	36	Lots 1 thru 7, NW4, W2NE4, NW4SE4, N2SW4	652.53
5443		16.N	20.E	1	Lots 2, 3, 4, S2N2, S2	536.71
5444		16.N	20.E	2	Lot 1, SE4NE4, E2SE4	138.90
5445		16.N	20.E	16	NW4, S2NE4, N2S2, SE4SE4	* 440.00
5446		16.N	20.E	36	All	* 640.00
5447		16.N	21.E	16	All	* 640.00
5448		16.N	21.E	36	All	640.00
5449		17.N	22.E	6	Lots 2, 3, 4, 5, 6, SE4NW4, SW4NE4	275.02
5450		17.N	22.E	16	All	640.00
5048		18.N	13.E	1	Lots 3, 4, S2NW4, SW4	* 319.09
5049		18.N	13.E	2	Lot 1, SE4NE4, E2SE4	* 159.44
5050		18.N	13.E	11	S2	320.00
5051		18.N	13.E	12	W2	320.00
5052		18.N	13.E	14	N2NW4	80.00
5053		18.N	13.E	15	NW4, N2NE4	240.00
5054		18.N	13.E	16	All	640.00
5055		18.N	13.E	17	NW4, E2NE4, SW4NE4, SE4	440.00
5056		18.N	13.E	19	Lots 3, 4, SE4, E2SW4	* 315.21
5057		18.N	13.E	20	N2, E2SE4	* 400.00
5058		18.N	13.E	21	W2NW4, NW4SW4	* 120.00
5059		18.N	13.E	36	All	* 640.00
5060		19.N	12.E	16	All	* 640.00
5061		19.N	12.E	36	All	* 640.00
5062		19.N	13.E	16	Lots 1, 2, 3, 4, E2W2, E2	* 635.48
5063		19.N	13.E	21	W2NW4, N2S2	* 240.00
5064		19.N	13.E	22	N2S2	* 160.00
5065		19.N	13.E	23	N2, N2S2	* 480.00
5066		19.N	13.E	24	NW4, N2NE4, N2SW4	* 320.00
5067		19.N	13.E	35	SE4	160.00
5068		19.N	13.E	36	All	640.00
Garfield		14				
5481		14.N	43.E	16	All	640.00
5482		14.N	43.E	22	W2W2, NE4NW4, NW4NE4	240.00
Hill		9				
5422		29.N	8.E	16	Lots 1, 2, N2, SE4, N2SW4 (subject to 70-16-201, MCA)	640.00
5423		29.N	8.E	36	Lots 1, 2, 3, N2, N2SE4, SW4 (subject to 70-16-201, MCA)	640.00

App#	Map Location	Twp	Rge	Sec	Description	Acres
Judith Basin		5				
5069		16.N	8.E	16	NW4NW4, S2NW4, E2E2, SW4SE4, SW4	* 480.00
5070		16.N	8.E	36	NE4	160.00
5071		16.N	9.E	13	S2NE4, N2SE4	160.00
5072		16.N	9.E	16	N2	* 320.00
5073		16.N	10.E	1	Lots 1, 2, 3, 4, S2N2, S2	645.20
5074		16.N	10.E	2	Lots 1, 2, 3, SE4NW4, S2NE4, SE4, E2SW4	480.34
5075		16.N	10.E	3	S2N2, S2	* 480.00
5076		16.N	10.E	4	Lots 3, 4, S2NW4, NE4SE4, N2SW4, SW4SW4	* 320.17
5077		16.N	10.E	5	SE4, NE4SW4, S2SW4	280.00
5078		16.N	10.E	6	Lots 1 thru 7, SE4NW4, S2NE4, N2SE4, SW4SE4, E2SW4	* 653.29
5079		16.N	10.E	7	SE4NE4, SE4	200.00
5080		16.N	10.E	8	W2, W2E2, NE4NE4	520.00
5081		16.N	10.E	9	W2NE4, SE4, SE4SW4	280.00
5082		16.N	10.E	10	NE4NW4, N2NE4, S2SE4, SW4	* 360.00
5083		16.N	10.E	11	W2, S2SE4	400.00
5084		16.N	10.E	12	S2SW4	80.00
5085		16.N	10.E	13	N2NW4, SE4NW4	120.00
5086		16.N	10.E	14	N2NE4, SW4NE4, SE4	280.00
5087		16.N	10.E	16	All	640.00
5088		16.N	10.E	17	NW4, W2NE4, S2	560.00
5089		16.N	10.E	18	Lots 1, 2, 3, 4, E2, E2W2	689.04
5090		16.N	10.E	19	Lots 1, 2, E2NW4, E2	504.60
5091		16.N	10.E	20	N2	320.00
5092		16.N	10.E	21	N2	320.00
5093		16.N	10.E	22	N2	320.00
5094		16.N	10.E	23	NE4	160.00
5095		16.N	10.E	24	E2E2	* 160.00
5096		16.N	10.E	26	SE4NW4, SW4SE4, E2SW4	160.00
5097		16.N	10.E	30	Lots 1, 2, E2NW4, NE4	344.00
5098		16.N	10.E	34	SE4SE4	40.00
5099		16.N	10.E	35	SE4, S2SW4	240.00
5100		16.N	10.E	36	All	640.00
5101		16.N	11.E	2	Lots 2, 3, 4, S2NW4, SW4NE4, S2	* 551.68
5102		16.N	11.E	3	Lot 1, SE4NE4, E2SE4, S2SW4	236.87
5103		16.N	11.E	4	Lots 3, 4, SW4NW4, NW4SW4	* 157.52
5104		16.N	11.E	5	Lots 1, 2, 3, 4, S2N2, N2S2	478.04
5105		16.N	11.E	6	Lots 1, 2, SE4NW4, S2NE4, N2SE4, NE4SW4	321.35
5106		16.N	11.E	10	W2, E2NE4	400.00
5107		16.N	11.E	11	N2	320.00
5108		16.N	11.E	14	E2SW4	80.00
5109		16.N	11.E	15	NW4	160.00
5110		16.N	11.E	16	All	* 640.00
5111		16.N	11.E	20	E2	* 320.00
5112		16.N	11.E	21	NE4NW4, S2NW4, NE4, W2SW4	* 360.00
5113		16.N	11.E	22	NE4NE4, S2NE4, N2SE4	200.00
5114		16.N	11.E	23	NW4, N2SW4	240.00
5115		16.N	11.E	26	N2NW4	80.00
5116		16.N	11.E	27	E2W2, NE4, N2SE4, SW4SE4	440.00
5117		16.N	11.E	29	W2SW4	80.00
5118		16.N	11.E	30	S2SE4, SE4SW4	120.00
5119		16.N	11.E	31	E2NW4, NW4NE4	120.00
5120		16.N	11.E	34	NW4, W2NE4	240.00
5121		16.N	11.E	36	All	* 640.00
5122		16.N	12.E	3	Lots 1, 2, 3, 4, S2N2, S2	* 594.00
5123		16.N	12.E	6	Lot 4	19.91
5124		16.N	12.E	9	All, less patented RR R/W	* 633.42
5125		16.N	12.E	11	S2NW4, NE4, S2	* 560.00
5126		16.N	12.E	16	E2, less 1.05 acre patented RR R/W	* 318.95
5127		16.N	12.E	17	SE4	* 160.00
5128		16.N	12.E	20	SE4, E2SW4	* 240.00

App#	Map Location	Twp	Rge	Sec	Description	Acres
5129		16.N	12.E	22	E2SE4	* 80.00
5130		16.N	12.E	23	W2SW4	* 80.00
5131		16.N	12.E	25	W2NW4	* 80.00
5132		16.N	12.E	26	N2NW4, SE4NW4, NE4, less 11.38 acre patented RR R/W	* 268.62
5133		16.N	12.E	27	NE4NE4, SE4, less patented RR R/W	* 197.24
5134		16.N	12.E	28	N2, N2SE4, SW4SE4, SW4	600.00
5135		16.N	12.E	34	E2NW4, NE4	240.00
5136		16.N	12.E	35	NE4, N2SE4, less 7.85 acres in NE4NE4	232.15
5137		16.N	12.E	36	All, less patented RR R/W	618.52
5138		16.N	13.E	9	E2	* 320.00
5139		16.N	13.E	10	SE4	* 160.00
5140		16.N	13.E	11	N2S2, SW4SW4	* 200.00
5141		16.N	13.E	14	NW4NW4	* 40.00
5142		16.N	13.E	15	NW4, N2NE4	* 240.00
5143		16.N	13.E	16	All	* 640.00
5144		16.N	13.E	31	Lots 1, 2, 3, 4, E2W2, E2	* 600.28
5145		16.N	13.E	32	All	640.00
5146		16.N	13.E	33	N2, SW4	* 480.00
5147		16.N	13.E	34	NW4	160.00
5148		16.N	13.E	36	All	* 640.00
5149		17.N	8.E	1	S2	320.00
5150		17.N	8.E	16	All	* 640.00
5151		17.N	8.E	36	SW4NW4, E2SE4, W2SW4	200.00
5152		17.N	9.E	4	Lots 1, 2, 3, 4	161.57
5153		17.N	9.E	5	Lots 1, 2, 3, 4, S2NW4, SW4	399.98
5154		17.N	9.E	6	Lots 1, 2, 6, 7, S2NE4, SE4, E2SW4	* 477.38
5155		17.N	9.E	7	E2	* 320.00
5156		17.N	9.E	8	All	* 640.00
5157		17.N	9.E	9	N2, SE4	* 480.00
5158		17.N	9.E	11	E2	320.00
5159		17.N	9.E	12	W2, N2NE4	* 400.00
5160		17.N	9.E	14	N2	* 320.00
5161		17.N	9.E	16	All	* 640.00
5162		17.N	9.E	17	N2, SE4	* 480.00
5163		17.N	9.E	18	NE4	160.00
5164		17.N	9.E	20	N2	* 320.00
5165		17.N	9.E	21	N2	320.00
5166		17.N	9.E	22	E2	* 320.00
5167		17.N	9.E	26	N2	* 320.00
5168		17.N	9.E	27	NW4	* 160.00
5169		17.N	9.E	28	All	* 640.00
5170		17.N	9.E	36	All	* 640.00
5171		17.N	10.E	1	Lots 3, 4, S2NW4, SW4	* 321.66
5172		17.N	10.E	2	Lots 1, 2, 4, S2NE4, SE4	* 362.96
5173		17.N	10.E	3	Lots 1, 2, S2SE4	* 161.12
5174		17.N	10.E	4	Lots 3, 4, S2NW4, E2SW4	241.01
5175		17.N	10.E	5	Lot 2, SW4NE4, NW4SE4	* 120.82
5176		17.N	10.E	8	E2E2	* 160.00
5177		17.N	10.E	9	W2, S2NE4, SE4	* 560.00
5178		17.N	10.E	10	S2NW4, NE4 less patented RR R/W, S2	552.61
5179		17.N	10.E	11	SE4, NW4SW4, S2SW4	280.00
5180		17.N	10.E	12	NW4NW4, N2NE4, SW4NE4, SE4SE4, NW4SW4, S2SW4	320.00
5181		17.N	10.E	13	N2NW4, SW4NW4, E2NE4, N2SE4, NW4SW4	* 320.00
5182		17.N	10.E	14	All	* 640.00
5183		17.N	10.E	15	All	* 640.00
5184		17.N	10.E	16	All	* 640.00
5185		17.N	10.E	17	NE4	160.00
5186		17.N	10.E	21	W2, E2NE4, S2SE4	* 480.00
5187		17.N	10.E	22	All	* 640.00
5188		17.N	10.E	23	N2, W2SE4, SW4	* 560.00
5189		17.N	10.E	24	S2NW4, E2, E2SW4	* 480.00
5190		17.N	10.E	25	All	* 640.00

App#	Map Location	Twp	Rge	Sec	Description	Acres
5191		17.N	10.E	26	All	640.00
5192		17.N	10.E	27	All	640.00
5193		17.N	10.E	28	N2N2	160.00
5194		17.N	10.E	34	E2	* 320.00
5195		17.N	10.E	35	All	* 640.00
5196		17.N	10.E	36	All	640.00
5197		17.N	11.E	1	S2NE4, SE4, NE4SW4, S2SW4	360.00
5198		17.N	11.E	2	Lots 1, 2, 3, 4, S2N2	317.44
5199		17.N	11.E	3	Lots 1, 2, 3, 4, S2N2, SW4	* 477.52
5200		17.N	11.E	7	Lots 1, 2, part of Lots 3, 4, E2W2, part S2SE4, part E2SW4	* 599.54
5201		17.N	11.E	8	N2, SW4, less patented RR R/W in S2SW4	* 469.52
5202		17.N	11.E	9	N2, SE4, N2SW4, SE4SW4, less patented RR R/W	* 587.48
5203		17.N	11.E	10	All, less patented RR R/W	638.08
5204		17.N	11.E	12	All	640.00
5205		17.N	11.E	13	NW4, NW4NE4, S2NE4, S2, less patented RR R/W	592.70
5206		17.N	11.E	14	NE4, E2SE4, less patented RR R/W	233.40
5207		17.N	11.E	15	W2, less patented RR R/W	308.80
5208		17.N	11.E	16	All	640.00
5209		17.N	11.E	17	NW4, S2NE4, S2	560.00
5210		17.N	11.E	18	Lots 1, 2, 3, 4, E2W2, N2NE4, S2SE4	* 478.27
5211		17.N	11.E	19	Lots 1, 2, 3, E2NW4, NE4	359.25
5212		17.N	11.E	20	All	640.00
5213		17.N	11.E	21	All	* 640.00
5214		17.N	11.E	22	NW4	160.00
5215		17.N	11.E	23	E2E2, SW4SE4	200.00
5216		17.N	11.E	24	W2, less patented RR R/W	277.45
5217		17.N	11.E	26	W2, W2E2	480.00
5218		17.N	11.E	27	E2	320.00
5219		17.N	11.E	28	N2, N2SE4, SW4SE4, SW4	600.00
5220		17.N	11.E	29	N2, SW4	480.00
5221		17.N	11.E	30	Lots 1, 2, 3, 4, E2W2, E2	639.04
5222		17.N	11.E	31	Lots 1, 2, E2NW4, NE4	319.57
5223		17.N	11.E	32	N2	320.00
5224		17.N	11.E	34	E2	320.00
5225		17.N	11.E	35	N2, N2SE4, SW4	560.00
5226		17.N	11.E	36	All	640.00
5227		17.N	12.E	1	SE4SE4	* 40.00
5228		17.N	12.E	4	Lots 1, 2, 3, 4, S2N2, N2SW4, SW4SW4	* 438.19
5229		17.N	12.E	5	Lots 1, 2, 3, 4, S2N2, S2	* 638.57
5230		17.N	12.E	6	Lots 1 thru 7, SE4NW4, S2NE4, SE4, E2SW4	* 640.64
5231		17.N	12.E	7	Lots 1, 2, E2NW4, NE4	* 320.40
5232		17.N	12.E	12	E2E2, SE4SW4	* 200.00
5233		17.N	12.E	13	E2NW4, E2, NE4SW4	* 440.00
5234		17.N	12.E	16	All	* 640.00
5235		17.N	12.E	19	Lot 4, SE4, E2SW4	* 280.34
5236		17.N	12.E	23	NE4NW4, S2NW4, NE4, S2	* 600.00
5237		17.N	12.E	24	All	* 640.00
5238		17.N	12.E	25	N2, SW4	* 480.00
5239		17.N	12.E	26	All	* 640.00
5240		17.N	12.E	27	NE4, N2SE4, SE4SE4	* 280.00
5241		17.N	12.E	30	Lots 1, 2, part of Lots 3, 4, E2NW4, N2NE4, part E2SW4	* 392.47
5242		17.N	12.E	31	Lots 1, 2, 3, 4, E2NW4, NE4SW4	280.38
5243		17.N	12.E	33	NE4NE4, S2NE4, SE4	* 280.00
5244		17.N	12.E	34	All	* 640.00
5245		17.N	12.E	35	All	* 640.00
5246		17.N	12.E	36	All	* 640.00
5247		17.N	13.E	4	Lots 1, 2, 3, 4, S2N2	* 312.68
5248		17.N	13.E	5	W2SW4	* 80.00
5249		17.N	13.E	6	SE4SE4	* 40.00
5250		17.N	13.E	7	Lots 1, 2, 3, 4, E2W2, E2	* 633.88
5251		17.N	13.E	8	All	* 640.00
5252		17.N	13.E	9	W2NW4	80.00

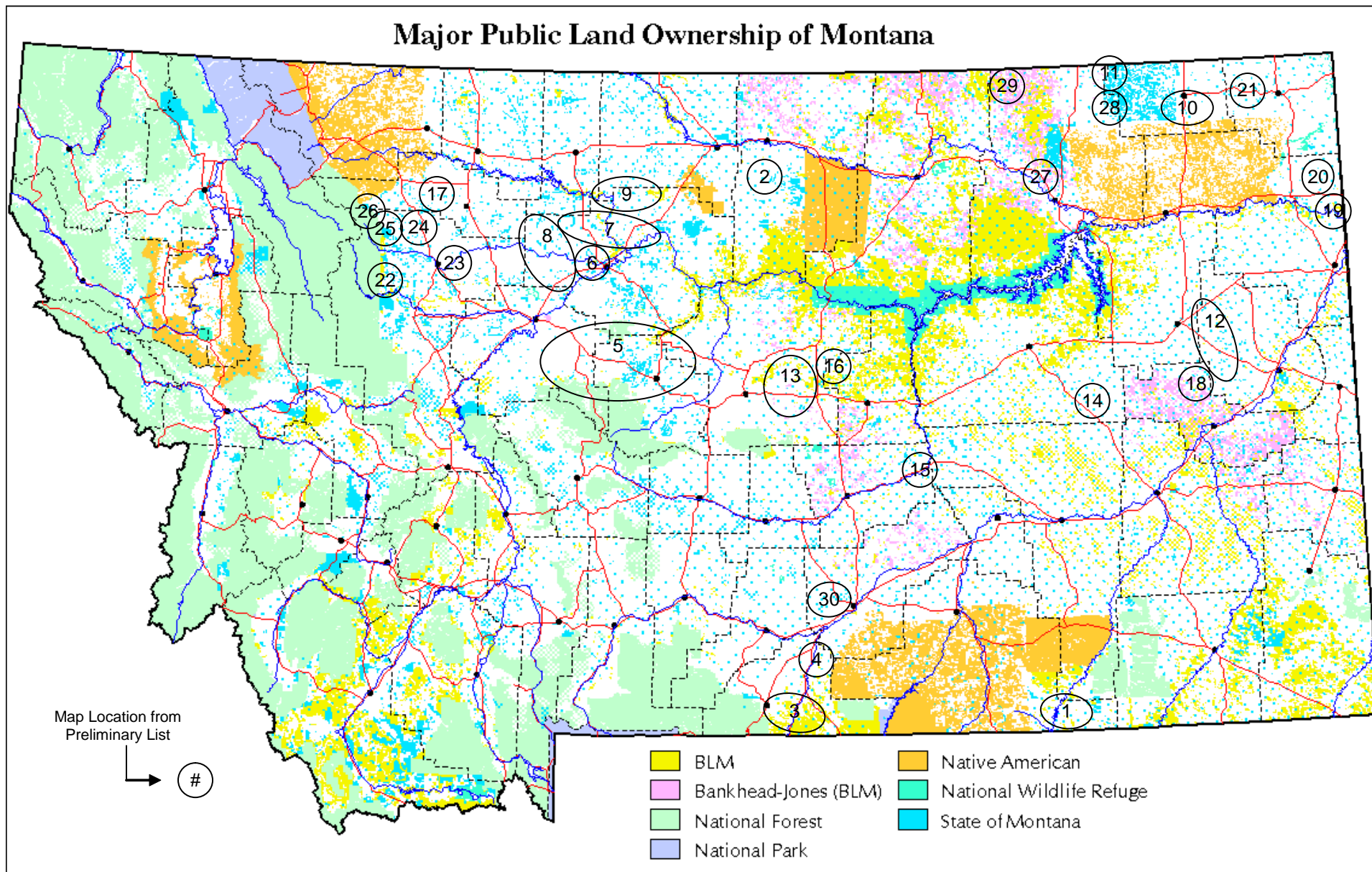
App#	Map Location	Twp	Rge	Sec	Description	Acres
5253		17.N	13.E	16	All	* 640.00
5254		17.N	13.E	17	NW4, W2NE4	* 240.00
5255		17.N	13.E	18	Lots 1, 2, 3, 4, E2W2, E2	* 636.96
5256		17.N	13.E	19	Lots 1, 2, 3, 4, E2W2, NE4	479.96
5257		17.N	13.E	29	E2E2	160.00
5258		17.N	13.E	36	All	* 640.00
5259		18.N	7.E	36	NW4NW4 less patented RR R/W, S2N2, S2	513.74
5260		18.N	8.E	16	All	* 640.00
5261		18.N	8.E	36	All less patented RR R/W in W2	* 623.65
5262		18.N	9.E	4	Lots 1, 2, S2NE4, SE4	319.86
5263		18.N	9.E	9	NW4NW4	40.00
5264		18.N	9.E	12	SE4SE4	40.00
5265		18.N	9.E	16	All	* 640.00
5266		18.N	9.E	36	All	640.00
5267		18.N	10.E	4	SW4	160.00
5268		18.N	10.E	7	Lots 3, 4, E2SW4	154.90
5269		18.N	10.E	11	E2SE4	80.00
5270		18.N	10.E	12	S2	* 320.00
5271		18.N	10.E	13	E2E2	160.00
5272		18.N	10.E	14	SW4	160.00
5273		18.N	10.E	15	All	640.00
5274		18.N	10.E	16	All	640.00
5275		18.N	10.E	17	SE4	160.00
5276		18.N	10.E	18	Lot 1	37.64
5277		18.N	10.E	19	Lots 2, 3, 4	116.12
5278		18.N	10.E	20	SE4NW4, N2SE4, NE4SW4	160.00
5279		18.N	10.E	23	N2NW4, S2SE4, SW4	* 320.00
5280		18.N	10.E	24	E2NE4, SW4SW4	120.00
5281		18.N	10.E	25	NW4NW4, E2	* 360.00
5282		18.N	10.E	26	N2, SW4	* 480.00
5283		18.N	10.E	27	S2	320.00
5284		18.N	10.E	28	SE4, E2SW4	* 240.00
5285		18.N	10.E	30	Lots 1, 2, 3, 4, E2	478.28
5286		18.N	10.E	31	Lots 1, 2	80.44
5287		18.N	10.E	32	SE4NW4, W2SE4, NE4SW4	* 160.00
5288		18.N	10.E	33	W2NW4, S2	* 400.00
5289		18.N	10.E	34	SE4	* 160.00
5290		18.N	10.E	35	E2NW4	80.00
5291		18.N	10.E	36	All	* 640.00
5292		18.N	11.E	7	Lots 1, 2, 3, 4, E2W2, E2	629.28
5293		18.N	11.E	16	Lots 1 thru 7, S2NW4, SW4NE4, W2SE4, SW4	* 641.14
5294		18.N	11.E	36	All	640.00
5295		18.N	12.E	13	S2NW4, SW4NE4, W2SE4, SW4	* 360.00
5296		18.N	12.E	14	NW4, NW4NE4, S2NE4, S2	* 600.00
5297		18.N	12.E	16	All	* 640.00
5298		18.N	12.E	24	SE4NW4, NE4NE4, S2NE4, SE4, NE4SW4, S2SW4	* 440.00
5299		18.N	12.E	25	All	* 640.00
5300		18.N	12.E	26	W2, W2E2	* 480.00
5301		18.N	12.E	27	All	* 640.00
5302		18.N	12.E	28	All	640.00
5303		18.N	12.E	29	All	* 640.00
5304		18.N	12.E	32	All	* 640.00
5305		18.N	12.E	33	All	* 640.00
5306		18.N	12.E	34	All	* 640.00
5307		18.N	12.E	36	All	* 640.00
5308		19.N	9.E	26	E2SW4	80.00
5309		19.N	9.E	27	SW4SE4, SE4SW4	* 80.00
5310		19.N	9.E	31	N2SE4, SE4SE4	120.00
5311		19.N	9.E	32	W2SW4	* 80.00
5312		19.N	9.E	33	NW4SE4, S2SE4, E2SW4	200.00
5313		19.N	9.E	34	E2NW4, W2E2, SE4SE4	* 280.00
5314		19.N	9.E	35	E2NW4, SW4SW4	* 120.00

App#	Map Location	Twp	Rge	Sec	Description	Acres
5315		19.N	9.E	36	Lots 1 thru 12, SW4	590.20
5316		19.N	10.E	13	NW4, SE4, N2SW4, SE4SW4	440.00
5317		19.N	10.E	14	E2NE4	80.00
5318		19.N	10.E	16	All	640.00
5319		19.N	10.E	36	All	640.00
5320		19.N	11.E	16	All	* 640.00
5321		19.N	11.E	36	All	640.00
Musselshell		15				
5338		10.N	31.E	16	All	640.00
Petroleum		16				
5451		17.N	24.E	16	All	640.00
Pondera		17				
5475		29.N	5.W	33	SE4SE4	* 40.00
5476		29.N	5.W	34	SE4, NE4SW4, S2SW4	* 280.00
5477		29.N	5.W	35	W2SW4	* 80.00
Prairie		18				
5378		16.N	50.E	16	All	640.00
5379		16.N	50.E	26	All	640.00
5380		16.N	50.E	36	All	640.00
Roosevelt		19,20				
5322		27.N	59.E	36	Lots 1, 2, 3, 4, W2W2	233.72
5336		30.N	57.E	16	All, below the base of the Mission Canyon formation	* 640.00
Sheridan		21				
5381		35.N	52.E	11	N2, N2SE4, SE4SE4, NE4SW4	* 480.00
5498		36.N	52.E	29	SE4SW4	40.00
5382		36.N	53.E	16	All	* 640.00
Teton		22,23,24,25,26				
5327		22.N	8.W	16	All	640.00
5328		22.N	8.W	17	S2NW4, N2NE4, SW4NE4	200.00
5329		22.N	8.W	21	W2E2	160.00
5323		24.N	4.W	16	All	* 640.00
5324		24.N	4.W	26	SE4SW4, Teton Riverbed and related acreage	51.00
5325		24.N	4.W	34	S2NE4, N2SE4, NE4SW4, S2SW4, Teton Riverbed and related acreage	288.00
5326		24.N	4.W	36	All	* 640.00
5478		27.N	6.W	27	E2, E2SW4	400.00
5479		27.N	6.W	34	NE4NW4, N2NE4, SE4NE4	160.00
5480		27.N	6.W	35	NW4	160.00
5330		27.N	8.W	12	SE4NE4	* 40.00

App#	Map Location	Twp	Rge	Sec	Description	Acres
5331		27.N	8.W	13	E2NW4, N2SW4, SW4SW4	200.00
5332		27.N	8.W	23	S2NW4, NE4NE4, SW4NE4, N2SE4	240.00
5333		27.N	8.W	24	S2SE4	80.00
5334		27.N	8.W	25	NE4NE4, S2S2	200.00
5335		27.N	9.W	6	Lots 3, 4, 5	140.06
Valley		27,28,29				
5499		30.N	38.E	34	E2SE4	80.00
5500		30.N	38.E	35	S2, less 2 acres in SW4SW4	318.00
5501		30.N	38.E	36	All	640.00
5483		34.N	43.E	4	Lots 1, 2, 3, 4, S2N2, S2	* 638.40
5484		34.N	43.E	9	SE4	160.00
5486		34.N	43.E	15	All	* 640.00
5487		34.N	43.E	16	All	* 640.00
5488		34.N	43.E	17	W2	320.00
5489		34.N	43.E	21	N2	320.00
5490		34.N	43.E	23	S2	320.00
5491		34.N	43.E	24	All	* 640.00
5492		34.N	43.E	25	All	* 640.00
5493		34.N	43.E	27	S2	320.00
5485		34.N	43.E	36	All	640.00
5348		37.N	36.E	16	All	640.00
Yellowstone		30				
5452		1.N	23.E	16	All	640.00
5453		1.N	23.E	36	All	640.00
5454		1.N	24.E	16	All	640.00
5455		1.N	24.E	20	All	640.00
5456		1.N	25.E	8	All	640.00
5457		1.N	25.E	10	All	640.00
5458		1.S	24.E	2	Lots 1, 2, 3, 4, S2N2, S2	* 639.23
5459		1.S	24.E	4	Lots 1, 2, 3, 4, S2N2, S2	637.60

* Part or all of tract is not state-owned surface

Major Public Land Ownership of Montana



State of Montana Oil & Gas Lease Sale – September 7, 2011

Areas where tracts are proposed for lease are noted with a large number corresponding to the map location number on the preliminary lease sale list. Please visit our website for detailed maps and additional lease sale information. (<http://www.dnrc.mt.gov/trust/mmb/og/>)